

STORAGE AND PRESERVATION OF PROCESS AND POWER PLANT COMPONENTS

Allianz Center for Technology (AZT)

APRIL 2021

STORAGE AND PRESERVATION OF PROCESS AND POWER PLANT COMPONENTS ARE NECESSARY TO PROTECT THE VALUE.



Preservation measures in a refinery

In general during transport and erection, preservation measures of components are necessary. Furthermore, delays in construction or commissioning of nuclear power plants, combined cycle power plants, solar thermal power plants, refineries or other fabrication facilities leads to an increased risk for sensitive components due to corrosion or contamination. Therefore, it is important to preserve and store the sensitive and expensive components with adequate measures.

TYPICAL EXAMPLES:



Combined cycle power station in Argentina



Fertilizer plant in Brazil

TYPICAL INSUFFICIENCIES DURING STORAGE:



Insufficient and faulty preservation measures



Insufficient preservation of the machine parts in a wooden box without dry air preservation

Allianz Center for Technology (AZT) supports the planning of temporary and long term preservation for all kinds of machines and boilers etc., carries out preservation checks at site and gives recommendations to improve the preservation measures.

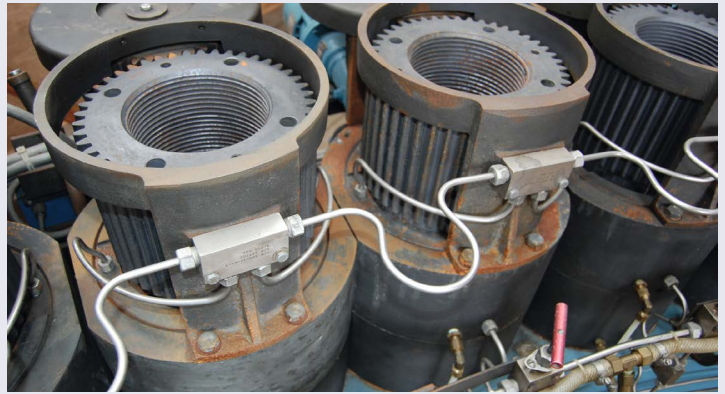
STANDARDS, WHICH ARE APPLIED BY AZT FOR REVIEWING PRESERVATION MEASURES:

- VGB Standards: Preservation of Power Plant Systems, Preservation of Steam Turbo Generator Sets etc
- MTI Publication: Guidelines for the Mothballing of Process Plants
- Current Publications

TYPICAL DAMAGES DUE TO INSUFFICIENT PRESERVATION:



Corrosion due to storage of a compressor in an open air area without sufficient protection



Detail of corrosion damage of special electro-hydraulic machines

DIRECT CONTACT

Rudolf Weber
Tel: +49.89.3800-6246
rudolf.weber1@allianz.com



ENGINEERING HOTLINE OF AZT
Tel. +49 89 3800 3000



Find out more about our services and products.

YOUR BENEFITS

- ✓ Support for planning preservation measures
- ✓ Independent check and review of the preservation activities/measures
- ✓ Prohibit problems and further delays due to corrosion or contamination
- ✓ Protect the value of the components or plants